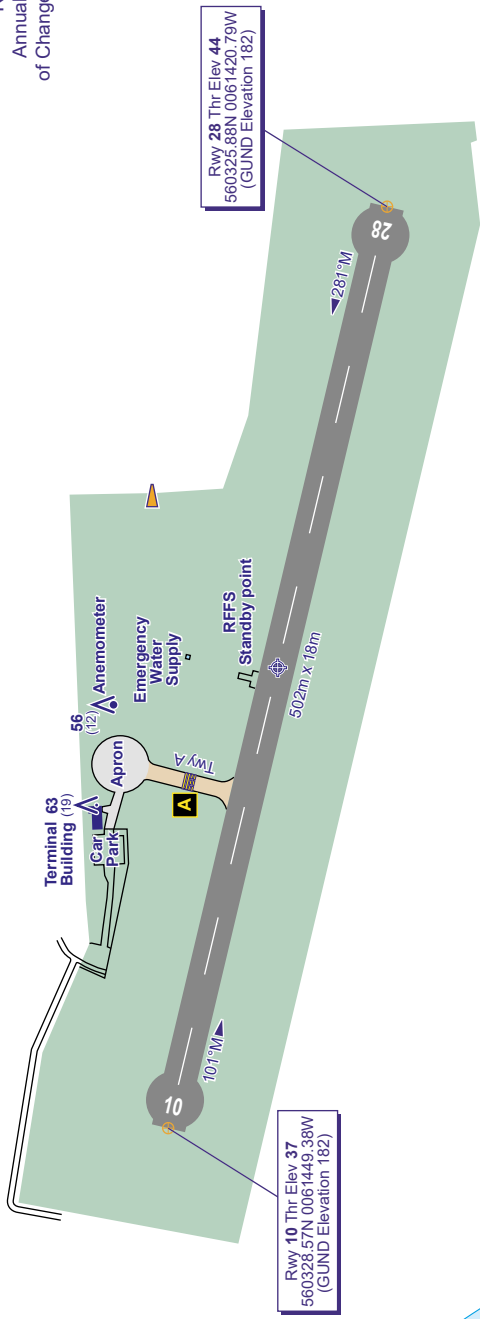


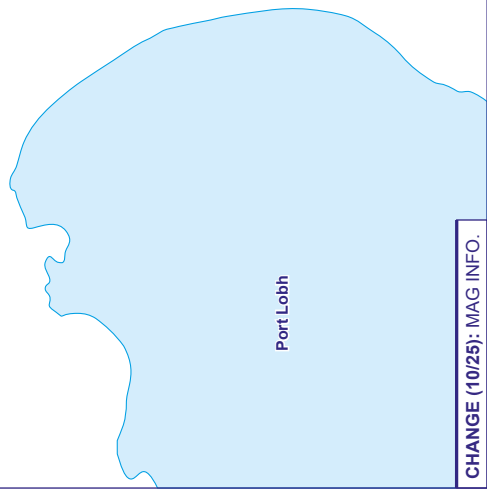
GUND (Geoid Undulation) = The height of the Geoid (MSL) above the Reference Ellipsoid (WGS 84) at the stated position.	
BEARINGS ARE MAGNETIC ELEVATIONS AND HEIGHTS ARE IN FEET	
ELEVATIONS IN FEET AMSL HEIGHTS IN FEET ABOVE AD	63 (19)

RUNWAY/TAXIWAY/APRON PHYSICAL CHARACTERISTICS		
APRON / RWY / TWY	SURFACE	BEARING STRENGTH
RWY 10/28	Asphalt	-
Apron	Asphalt	ESWL 1,500kg
Taxiway A	Asphalt	ESWL 1,500kg



Rwy 28 Thr Elev 44
560325.88N 0061420.79W
(GUND Elevation 182)

Rwy 10 Thr Elev 37
560328.57N 0061445.38W
(GUND Elevation 182)



COM	A/G	123.805	COLONSAY RADIO
-----	-----	---------	----------------

CHANGE (10/25): MAG INFO.